

# Reyee 5&8-Port Unmanaged Switches Datasheet

**Ruijie Networks Co.,Ltd**

Floor 11,East Wing, Zhongyipengao Plaza,  
No.29 Fuxing Road, HaidianDistrict, Beijing China  
Website : <https://www.ruijienetworks.com>

**Partner NET**

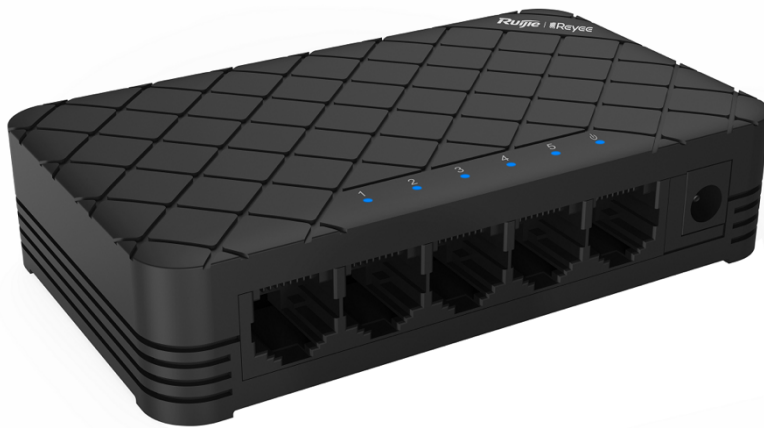
SMART ICT DISTRIBUTION

# 1 Product Overview

The perfect combination of quality, ease of use & cost effectiveness

Ruijie Real-easy Series Plastic Switch is a desktop switch tailored for small enterprises, small-scale surveillance and SOHO, which consists of a total of 4 different models to meet the network needs of small enterprise customers. The switches feature plug and play, zero configuration and compatibility with a variety of terminals such as network cameras, printers, PCs, etc., to offer fast deployment experience.

## Product Photos



RG-ES05/ES05G



RG-ES08/ES08G

## 2 Product Features

### Exquisite Design

The matte-finish diamond pattern design with honeycomb heat dissipation holes at the bottom ensures effective heat dissipation while offering an exquisite appearance. The embedded foot pads and hidden hanging hole design also provide ease of use for the users.

### Easy Addition to Topology

If the Ruijie Cloud management platform is available, you can add the 5/8-port Plastic Series to the topology manually or by scanning the QR code to conveniently output a complete topology.

### Enterprise-grade Quality

The high-quality 8-core network cable and enterprise-grade components ensure no packet loss or lagging for data transmission.

### Rigorous Testing

A series of rigorous tests have been performed in the manufacturing process, including anti-drop test, anti-collision test, high-temperature resistance test and humidity resistance test, to provide worry-free products.

### Plug and Play & Energy Saving

Self-adaptive feature is supported for the network ports. With zero configuration, the device can operate instantly after plugging in. The energy saving feature enables the non-operating ports to automatically reduce power consumption, and the fanless design also enables noiseless operation.

### Strong Adaptability for Various Network Requirements

The series is an ideal choice for surveillance, small enterprises, school dormitories, SOHO, and domestic use.

## 3 Technical Specifications

| Model                     | RG-ES05  | RG-ES05G                       | RG-ES08                      | RG-ES08G                       |
|---------------------------|--|--------------------------------|------------------------------|--------------------------------|
| Ports                     | 5 10/100M<br>Base-T ports  | 5 10/100/1000M<br>Base-T ports | 8 10/100M<br>Base-T ports    | 8 10/100/1000M<br>Base-T ports |
| Operating mode            | Half-duplex, full-duplex, auto-negotiation mode<br>Support auto MDI/MDIX   |                                |                              |                                |
| Backplane bandwidth       | 1Gbps  | 10Gbps                         | 1.6Gbps                      | 16Gbps                         |
| Packet forwarding rate    | 0.744Mpps  | 7.44Mpps                       | 1.1904Mpps                   | 11.904Mpps                     |
| MAC address               | 1K   | 2K                             | 1K                           | 4K                             |
| Power supply              | External, DC<br>5.0V / 600mA   | External, DC<br>5.0V / 600mA   | External, DC<br>5.0V / 600mA | External, DC<br>9.0V / 600mA   |
| Maximum power consumption | ≤2.5W  | ≤3W                            | ≤3.5W                        | ≤6.5W                          |
| Fan                       | Fanless  | Fanless                        | Fanless                      | Fanless                        |
| Dimensions                | 108.1mm*64mm<br>*24.8mm  | 108.1mm*64mm<br>*24.8mm        | 144mm*85mm*<br>23mm          | 144mm*85mm*<br>23mm            |
| Temperature               | Operating temperature: 0 °C ~ 40 °C<br>Storage temperature: -40 °C ~ 70 °C |                                |                              |                                |
| Humidity                  | Operating humidity: 10% ~ 90% RH<br>Storage humidity: 5% ~ 95% RH          |                                |                              |                                |

## 4 Ordering Information

| Model    | Description                 |
|----------|-----------------------------|
| RG-ES05  | 5 10/100M Base-T ports      |
| RG-ES05G | 5 10/100/1000M Base-T ports |
| RG-ES08  | 8 10/100M Base-T ports      |
| RG-ES08G | 8 10/100/1000M Base-T ports |



**FOLLOW US**



**[sales@partnernet-ict.com](mailto:sales@partnernet-ict.com) | +30 210 710 0000 | [www.partnernet-ict.com](http://www.partnernet-ict.com)**