

# RG-NBS51/52 series Layer 3 Cloud Managed Switches

## DATASHEET

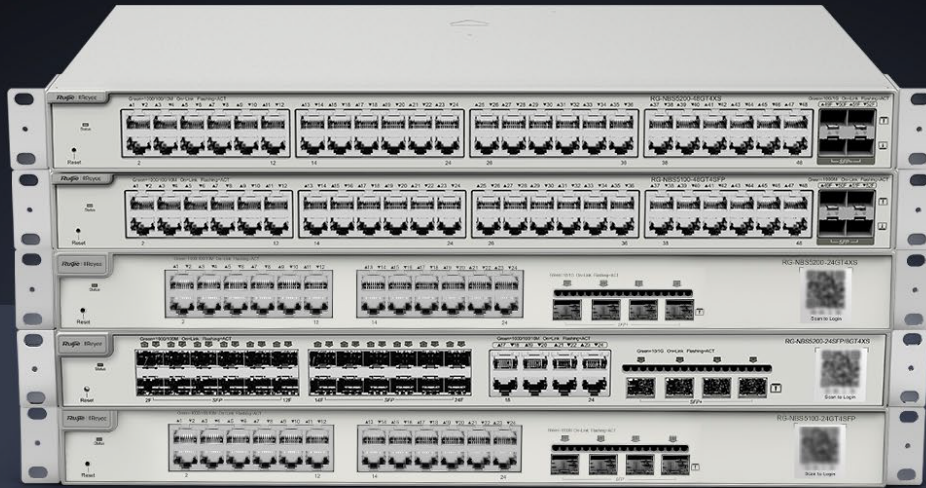


### Highlights

- Enterprise-class quality ensures High Performance
- Dynamic routing allows traffic to be routed at Layer 3
- Multiple security policies protect your network
- Lifetime management on Ruijie Cloud at anytime anywhere


## RG-NBS5000 Series Switch

High performance Layer 3 switch for core/aggregation



 Dynamic Routing

 6kV Surge Protection

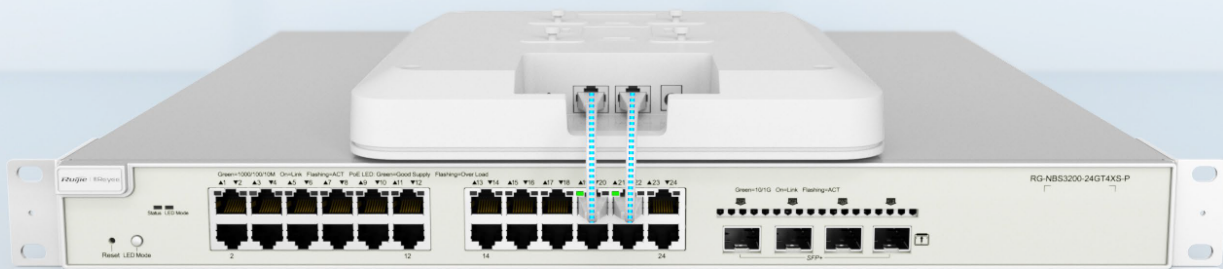
 5 Years Warranty

## Enterprise-class Quality Ensures High Performance

[Link Aggregation](#)

[IGMP Snooping](#)

[VLAN](#)



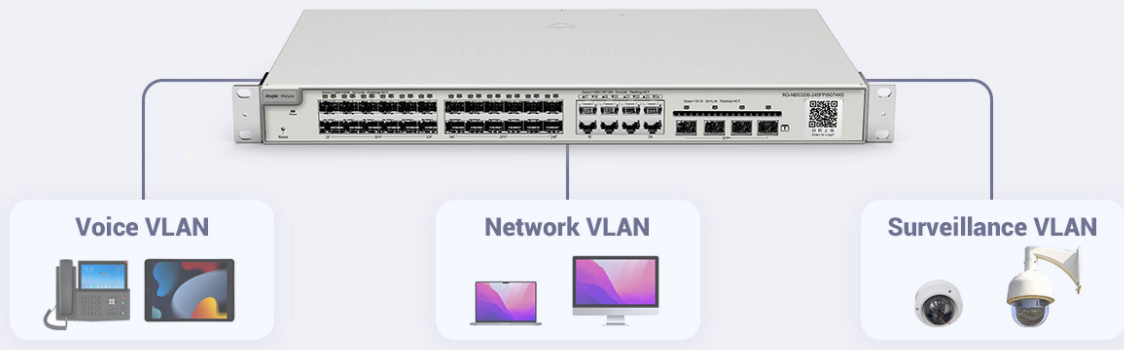
## Enterprise-class Quality Ensures High Performance

Link Aggregation   **IGMP Snooping**   VLAN



## Enterprise-class Quality Ensures High Performance

Link Aggregation   IGMP Snooping   **VLAN**



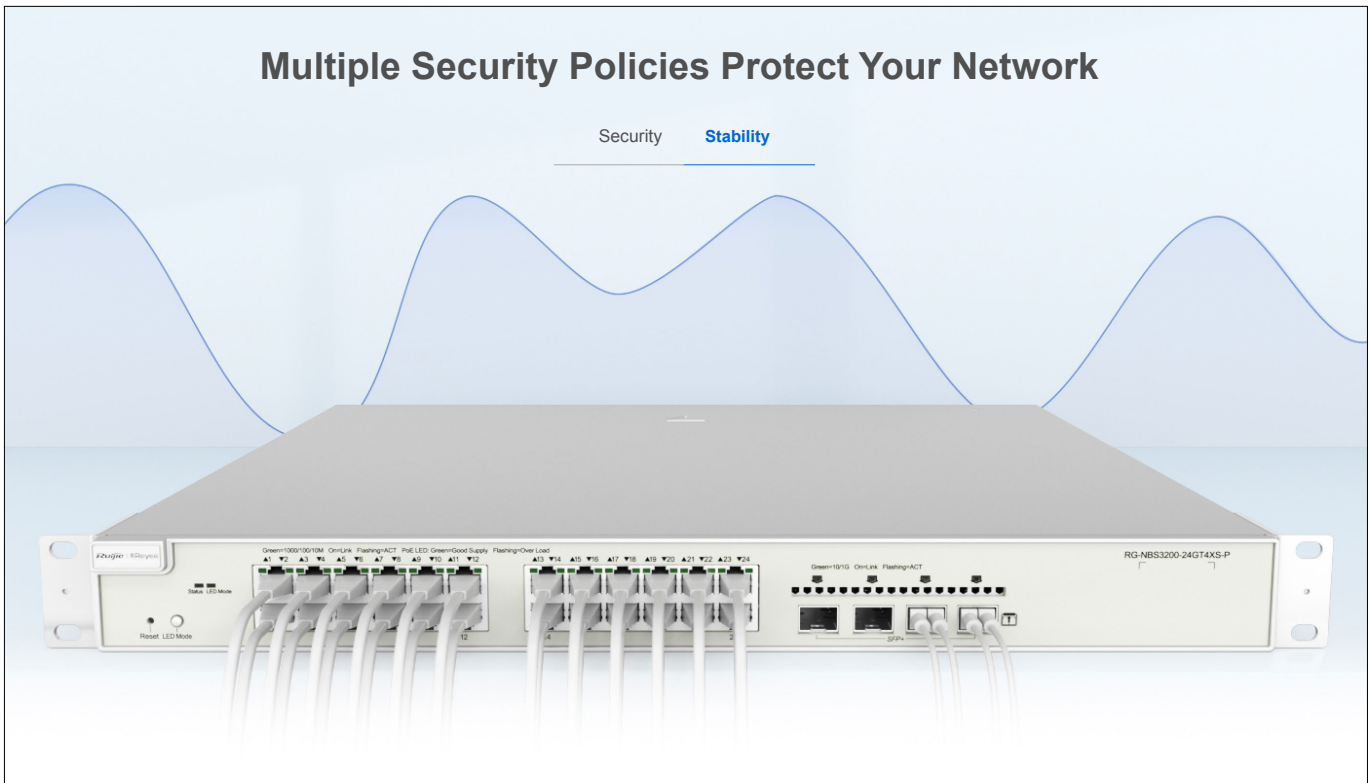
## Multiple Security Policies Protect Your Network

Security Stability



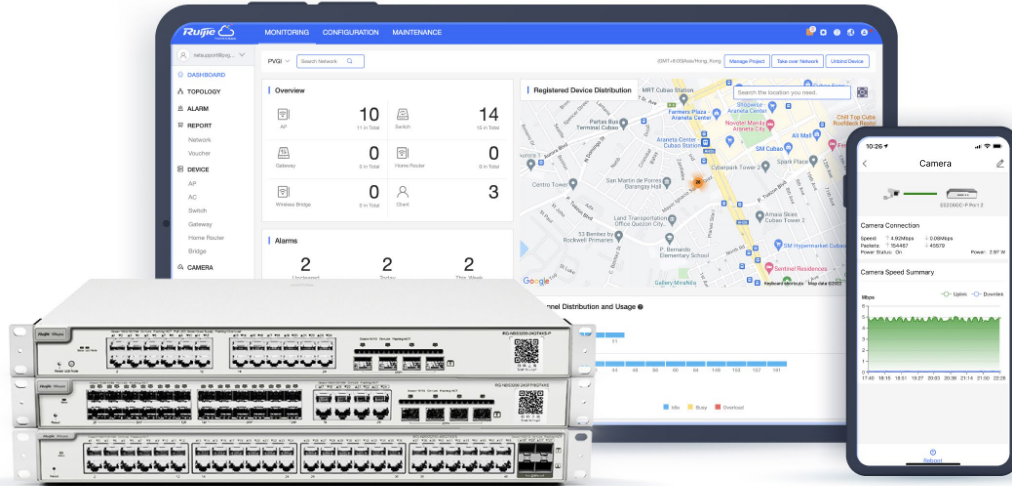
## Multiple Security Policies Protect Your Network

Security **Stability**



## Cloud, Make Your Business Easy

- SON, zero touch provisioning to Cloud
- Monitor switch statistics at anytime anywhere
- Configure VLANs on Ruijie Cloud APP
- Easy maintenance, save onsite time and cost





## Layer 2 Features

Model	RG-NBS5100-24GT4SFP	RG-NBS5100-24GT4SFP-P	RG-NBS5100-48GT4SFP	RG-NBS5200-24GT4XS	RG-NBS5200-24GT4XS-P	RG-NBS5200-24SFP/8GT4XS	RG-NBS5200-48GT4XS	RG-NBS5200-48GT4XS-UP
BPDU Guard	✓	✓	✓	✓	✓	✓	✓	✓
Errisable Recovery	✓	✓	✓	✓	✓	✓	✓	✓
Max. Aggregation Group	16	16	16	16	16	16	16	16
Max. Member per Group	8	8	8	8	8	8	8	8
Unknow Unicast Storm Suppression	✓	✓	✓	✓	✓	✓	✓	✓
Multicast / Broadcast Storm Suppression	✓	✓	✓	✓	✓	✓	✓	✓
Many-to-One Mirroring	✓	✓	✓	✓	✓	✓	✓	✓
VLAN Range	1-4094	1-4094	1-4094	1-4094	1-4094	1-4094	1-4094	1-4094
Port-based VLAN	✓	✓	✓	✓	✓	✓	✓	✓
MAC-based VLAN	✓	✓	✓	✓	✓	✓	✓	✓
IP-based VLAN	✓	✓	✓	✓	✓	✓	✓	✓
Voice VLAN	✓	✓	✓	✓	✓	✓	✓	✓
RLDP	✓	✓	✓	✓	✓	✓	✓	✓
LLDP / LLDP-MED	✓	✓	✓	✓	✓	✓	✓	✓
Cable Testing	✓	✓	✓	✓	✓	✓	✓	✓
IGMP Snooping v1/v2/v3	✓	✓	✓	✓	✓	✓	✓	✓

## Software Features

Ping	✓	✓	✓	✓	✓	✓	✓	✓
Traceroute	✓	✓	✓	✓	✓	✓	✓	✓
ACL Entries	1900	1900	1900	1900	1900	1900	1900	1900
Static Routing	✓	✓	✓	✓	✓	✓	✓	✓
IP Standard ACL	✓	✓	✓	✓	✓	✓	✓	✓

## Software Features

Model	RG-NBS5100-24GT4SFP	RG-NBS5100-24GT4SFP-P	RG-NBS5100-48GT4SFP	RG-NBS5200-24GT4XS	RG-NBS5200-24GT4XS-P	RG-NBS5200-24SFP/8GT4XS	RG-NBS5200-48GT4XS	RG-NBS5200-48GT4XS-UP
MAC-based Extended ACL	✓	✓	✓	✓	✓	✓	✓	✓
IP-based Extended ACL	✓	✓	✓	✓	✓	✓	✓	✓
Port-based Rate Limit (Ingress/Egress)	✓	✓	✓	✓	✓	✓	✓	✓
SNMP v1/v2c/v3	✓	✓	✓	✓	✓	✓	✓	✓
OSPF	✓	✓	✓	✓	✓	✓	✓	✓
RIP	✓	✓	✓	✓	✓	✓	✓	✓
802.1X	✓	✓	✓	✓	✓	✓	✓	✓
IPV6	✓	✓	✓	✓	✓	✓	✓	✓
DHCP Server	✓	✓	✓	✓	✓	✓	✓	✓
Web Management	✓	✓	✓	✓	✓	✓	✓	✓
Management IP	10.44.77.200	10.44.77.200	10.44.77.200	10.44.77.200	10.44.77.200	10.44.77.200	10.44.77.200	10.44.77.200
HTTP/HTTPS	✓	✓	✓	✓	✓	✓	✓	✓
Cloud Management	✓	✓	✓	✓	✓	✓	✓	✓
SON (Self-Organizing Network) with IP	✓	✓	✓	✓	✓	✓	✓	✓
Camera Recognition	✓	✓	✓	✓	✓	✓	✓	✓
Loop Prevention	✓	✓	✓	✓	✓	✓	✓	✓
Loop Notification	✓	✓	✓	✓	✓	✓	✓	✓
PoE Usage Alarm	-	✓	-	-	✓	-	-	✓
Protection Port	✓	✓	✓	✓	✓	✓	✓	✓
IP Source Guard	✓	✓	✓	✓	✓	✓	✓	✓
Anti-ARP Spoofing	✓	✓	✓	✓	✓	✓	✓	✓
DHCP Snooping	✓	✓	✓	✓	✓	✓	✓	✓
DHCP Client	✓	✓	✓	✓	✓	✓	✓	✓



## Physical Features

Model	RG-NBS5100-24GT4SFP	RG-NBS5100-24GT4SFP-P	RG-NBS5100-48GT4SFP	RG-NBS5200-24GT4XS	RG-NBS5200-24GT4XS-P	RG-NBS5200-24SFP/8GT4XS	RG-NBS5200-48GT4XS	RG-NBS5200-48GT4XS-UP
Flash Memory	256MB	256MB	256MB	256MB	256MB	256MB	256MB	256MB
Reset Button	Front	Front	Front	Front	Front	Front	Front	Front
Cable Hot-swappable	✓	✓	✓	✓	✓	✓	✓	✓
Power Supply Slot	Single, fixed power supply	Single, fixed power supply	Single, fixed power supply	Single, fixed power supply	Single, fixed power supply	Single, fixed power supply	Single, fixed power supply	Single, fixed power supply
Power Supplies	100 - 240V AC, 1.5A	100 - 240V AC, 6A	100 - 240V AC, 2A	100 - 240V AC, 1.5A	100 - 240V AC, 6A	100 - 240V AC, 2A	100 - 240V AC, 2A	100 - 240V AC, 10A
Power Consumption	≤ 28W	≤ 431.86W	≤ 46.4W	≤ 28W	≤ 431.86W	≤ 41.8W	≤ 46.4W	≤ 815.6W
EEE	✓	✓	✓	✓	✓	✓	✓	✓
Fan	1	2	1	1	2	1	1	3
Airflow	Left-to-Rear	Left-to-Rear	Left/Right-to-Rear	Left-to-Rear	Left-to-Rear	Left-to-Rear	Left/Right-to-Rear	Left/Right-to-Rear
Fan Adaptive Speed Adjustment	✓	✓	✓	✓	✓	✓	✓	✓
Acoustic Noise	< 45dB	< 45dB	< 45dB	< 45dB	< 45dB	< 45dB	< 45dB	< 65dB
Operating Temperature	0°C to 50°C (32°F to 122°F)	0°C to 50°C (32°F to 122°F)	0°C to 50°C (32°F to 122°F)	0°C to 50°C (32°F to 122°F)	0°C to 50°C (32°F to 122°F)	0°C to 50°C (32°F to 122°F)	0°C to 50°C (32°F to 122°F)	0°C to 50°C (32°F to 122°F)
Storage Temperature	-40°C to 70°C (-40°F to 158°F)	-40°C to 70°C (-40°F to 158°F)	-40°C to 70°C (-40°F to 158°F)	-40°C to 70°C (-40°F to 158°F)	-40°C to 70°C (-40°F to 158°F)	-40°C to 70°C (-40°F to 158°F)	-40°C to 70°C (-40°F to 158°F)	-40°C to 70°C (-40°F to 158°F)
Operating Humidity	10% to 90% RH	10% to 90% RH	10% to 90% RH	10% to 90% RH	10% to 90% RH	10% to 90% RH	10% to 90% RH	10% to 90% RH
Storage Humidity	5% to 95% RH	5% to 95% RH	5% to 95% RH	5% to 95% RH	5% to 95% RH	5% to 95% RH	5% to 95% RH	5% to 95% RH
Port Surge	6 kV	6 kV	6 kV	6 kV	6 kV	6 kV	6 kV	6 kV
Operating Altitude (meters)	-500 to 5000	-500 to 5000	-500 to 5000	-500 to 5000	-500 to 5000	-500 to 5000	-500 to 5000	-500 to 5000
Certificate	CE, RoHS	CE, RoHS	CE, RoHS	CE, RoHS	CE, RoHS	CE, RoHS	CE, RoHS	CE, RoHS

# Package Contents



Device	RG-NBS5100-24GT4SFP	RG-NBS5100-24GT4SFP-P	RG-NBS5100-48GT4SFP	RG-NBS5200-24GT4XS	RG-NBS5200-24GT4XS-P	RG-NBS5200-24SFP/8GT4XS	RG-NBS5200-48GT4XS	RG-NBS5200-48GT4XS-UP
Mounting Bracket	2	2	2	2	2	2	2	2
Foot pad	4	4	4	4	4	4	4	4
Power supply	Power cord	Power cord	Power cord	Power cord	Power cord	Power cord	Power cord	Power cord
Quick Start Guide	1	1	1	1	1	1	1	1
Warranty Card	1	1	1	1	1	1	1	1
Accessories	Screws * 8	Screws * 8	Screws * 8	Screws * 8	Screws * 8	Screws * 8	Screws * 8	Screws * 8
Package Weight	1.2 kg	4.75 kg	2 kg	2.4 kg	4.75 kg	4.5 kg	2.9 kg	4.9 kg
Package Dimension (w x d x h)	513 mm x 333 mm x 145 mm	573 mm x 468 mm x 165 mm	573 mm x 401 mm x 145 mm	513 mm x 333 mm x 145 mm	573 mm x 468 mm x 165 mm	573 mm x 401 mm x 145 mm	573 mm x 401 mm x 145 mm	573 mm x 468 mm x 165 mm

**Ruijie | Rcycc**

 **Redefine your easy network**



**FOLLOW US**



**sales@partnernet-ict.com | +30 210 710 0000 | www.partnernet-ict.com**

**Copyright ©2000-2023 Ruijie Networks Co., Ltd. All rights reserved.**

No part of this document may be reproduced or transmitted in any form or any means without prior written consent of Ruijie Networks Co., Ltd.

**Notice**

This content is applicable only to regions outside the China mainland. Ruijie Networks Co., Ltd. reserves the right to interpret this content.

The information contained herein is subject to change without notice. Nothing herein should be construed as constituting an additional warranty. Ruijie Networks Co., Ltd. shall not be liable for technical or editorial errors or omissions contained herein.